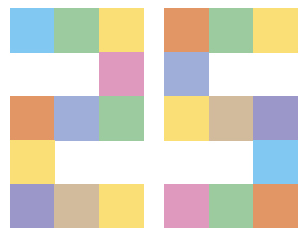


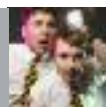
imagine  
festival



5-12 MAY  
2014

TICKETS: 0131 228 1404  
WWW.TRAVERSE.CO.UK

THE YEARS JUST FLY BY,  
DON'T THEY?  
JOIN US FOR OUR  
25TH BIRTHDAY  
CELEBRATIONS



ALBA | CHRUTHACHAIL

• EDINBURGH •  
THE CITY OF EDINBURGH COUNCIL



supported through the Scottish Government's Edinburgh Festivals Expo Fund



# About Imagineate

**Imagineate is a unique organisation in Scotland, leading in the promotion, development and celebration of the performing arts for children and young people.**

**We achieve this through an annual programme of creative development and performance, including the world famous Imagineate Festival, Scotland's international festival of performing arts for children and young people.**



Image: Geraldine Heaney

## THE IMAGINATE FESTIVAL

Every year the Festival and Festival on Tour attracts thousands of children and young people, their teachers, families and carers, alongside national and international delegates.

Imagineate's Festival in Schools programme offers FREE performances of award-winning theatre from the UK for schools that do not have the resources to independently support visits to the Festival.

Imagineate's Festival Family Fringe gives local artists and performers opportunities to create, perform and experiment with new ideas for family audiences. Fun packed and full of variety, this programme of short performances takes place in the Traverse café bar during the Festival. See the inside back cover of this brochure for details of this year's Family Fringe.

## BEYOND THE FESTIVAL

Imagineate believes that a high quality creative development programme is the key to unlocking creativity and supporting artistic excellence in the performing arts sector for children and young people in Scotland. This programme creates regular opportunities for artists and practitioners, whether they are students, established artists or at the beginning of their career. Imagineate continually works with many partners in the areas of research, advocacy and audience development, with the aim of increasing access and participation and enhancing the experience of attending a performing arts event for children and young people.

For more information on Imagineate and the Festival please visit

[www.imagineate.org.uk](http://www.imagineate.org.uk)

# Imagineate Festival Funders & Support

**Every year Imagineate receives financial and in kind support from a range of national and international organisations. We would like to thank them all for their invaluable support of the Imagineate Festival.**

If you would like to know more about our supporters or how to support us, please visit: [www.imagineate.org.uk/support/](http://www.imagineate.org.uk/support/)

## MAJOR FUNDERS




## TRUSTS AND FOUNDATIONS



## PARTNERSHIPS



The Festival is produced by  promoting and developing performing arts for children and young people in Scotland  
Imagineate is a company limited by guarantee. Company No. SC115855 Charity No. SC016437

**Imagineate** Summerhall, 1 Summerhall, Edinburgh, EH9 1PL  
tel: 0131 225 8050 • email: [info@imagineate.org.uk](mailto:info@imagineate.org.uk) • web: [www.imagineate.org.uk](http://www.imagineate.org.uk)

You can also follow us



on Facebook at [www.facebook.com/ImagineateUK](http://www.facebook.com/ImagineateUK)  
and [www.facebook.com/ImagineateArtists](http://www.facebook.com/ImagineateArtists)



or Twitter at [www.twitter.com/ImagineateUK](http://www.twitter.com/ImagineateUK)



Promoting Sustainable Forest Management



**Please recycle this leaflet.** Once you have finished with your copy, please consider passing it on to a colleague or friend or recycle it. Design: [map.ref.ltd](http://map.ref.ltd). [0141.429.7956]





# Too Many Penguins

AGE:  
1-4

**How many penguins are too many penguins?  
Mr Polaro thinks that one is more than enough, thank you very much.**

**Penguina wants someone to play with.  
Just one friend...  
Well, maybe two...  
Or three...**

How many penguins can we get in one space? Squeeze into this fun theatrical experience, created especially for 1 - 4 year olds, to find out. It might get crowded, but we promise the arrival of the penguins, however many, will entertain and delight.

2012 Winner of Critics Award for Theatre in Scotland for Best Production for Children and Young People.

*"A little bit of theatrical magic" ★★★★★* The Scotsman

Imagine Festival Director says:

*"Although set in chilly Antarctica, this show is warm, cosy and a huge amount of fun."*



Image: Douglas McBride

## FESTIVAL PERFORMANCES

### CHURCH HILL THEATRE STUDIO

**Friday 9 May** 10.30  
**Saturday 10 May** 14.30 & 16.30  
**Sunday 11 May** 13.30 & 15.30  
**Monday 12 May** 09.30 & 11.30

Duration: **45 minutes**  
(includes 10 minutes interactive playtime)  
Seating: **Cushions and benches**

*This show is made especially for a small audience!*



# a small story eine kleine geschichte

AGE:  
2-4

**A world of objects and visual storytelling for 2-4 year olds**

Imagine Festival Director says:

*"Imagine is delighted to bring these two companies and two leading artists, Andy Manley and Ania Michaelis, together for a very special small story."*



Image: David Beecroft

Funded by the Support for innovative Approaches of the Fonds darstellende Künste e.V. (Fund for Performing Arts), funded by the Federal Republic of Germany and the Berlin Senate Cultural Affairs department.

Let's say...

Something begins  
A movement  
Maybe a touch  
Time passes  
Together  
Sleep, eat, breathe  
Love  
Sometimes a quarrel  
Enough kisses  
From time to time cake  
Life

**A small story.**

*"...full of surprises. It couldn't be more exciting. Ideal for the youngest audience".*  
Neues Deutschland

## FESTIVAL PERFORMANCES

### CHURCH HILL THEATRE STUDIO

**Tuesday 6 May** 13.30 & 15.00  
**Wednesday 7 May** 09.30 & 11.30  
**Thursday 8 May** 13.30 & 15.00  
**Friday 9 May** 13.30 & 15.00  
**Saturday 10 May** 10.30 & 12.30

Duration: **35 minutes**  
Seating: **Cushions and benches**

*This show is made especially for a small audience!*

# Cocoon

AGE:  
2 - 5

**Cocoon is a play about the boundless possibilities of being.**

It feels like a gentle dream when suddenly - crackle, crackle, chuckle - a mysterious being suddenly comes into the world. What now?

A cocoon can protect us, but it can also hold us back. Throwing it off will feel airy and free, but it can also make us vulnerable. How can we be strong and soft, free and protected, at the same time?

With few words and live music, Theater o.N. take their very young audience on a journey: from the very beginnings of life, passing through stages of metamorphosis, from dreaming to dancing.

*Cocoon* was nominated for the Ikarus Prize in 2011.

***"A small, nearly completely abstract piece of art that can also make a big impression on adults with its well thought-out composition."*** (Ikarus jury, 2011)

Supported by the Berlin Senate Cultural Affairs Department, the Pankow Department for Culture and Education and the Fonds Darstellende Künste e.V. (Fund for Performing Arts) funded by the Federal Republic of Germany.

Imagine Festival Director says:

*"Cocoon is everything you want from a show for wee ones. The right mix of story, movement, wonder and magic."*

## FESTIVAL PERFORMANCES

### CHURCH HILL THEATRE STUDIO

**Tuesday 6 May** 09.30 & 11.30  
**Wednesday 7 May** 13.30 & 15.00  
**Thursday 8 May** 09.30 & 11.30

Duration: **45 minutes**  
 (includes 10 minutes interactive playtime)  
 Seating: **Cushions and benches**

*This show is made especially for a small audience!*

**Please note that walnuts are used on stage during the performances.**



Image: Till Budde

[www.theater-on.com](http://www.theater-on.com)



# Not Now Bernard

AGE:  
2 - 5

*"There's a monster in the garden and it's going to eat me" said Bernard.*

Bernard's got a problem.

He's found a monster in the back garden and his mum and dad are just too busy to notice. So Bernard tries to befriend the monster... and that doesn't go quite to plan.

Loved by children, adults and monsters for over thirty years, David McKee's iconic picture-book is vividly brought to life on stage.



Supported using public funding by  
**ARTS COUNCIL ENGLAND**

[www.unicorntheatre.com](http://www.unicorntheatre.com)

Imagine Festival Director says:

*"We're delighted to have the Unicorn Theatre back again with this well loved classic that will appeal to young and old alike."*

## FESTIVAL PERFORMANCES

### TRAVERSE THEATRE

**Wednesday 7 May** 10.15 & 13.15  
**Thursday 8 May** 10.30 & 13.30\*  
**Saturday 10 May** 11.45 & 14.45

Duration: **50 minutes**  
 Seating: **Theatre seating**

\* Relaxed performance



Image: David McKee



# Saltbush

## Children's Cheering Carpet

AGE:  
4-8

**Saltbush is an interactive journey through the culture and landscape of Aboriginal Australia, celebrated through live dance, music, song and stories.**

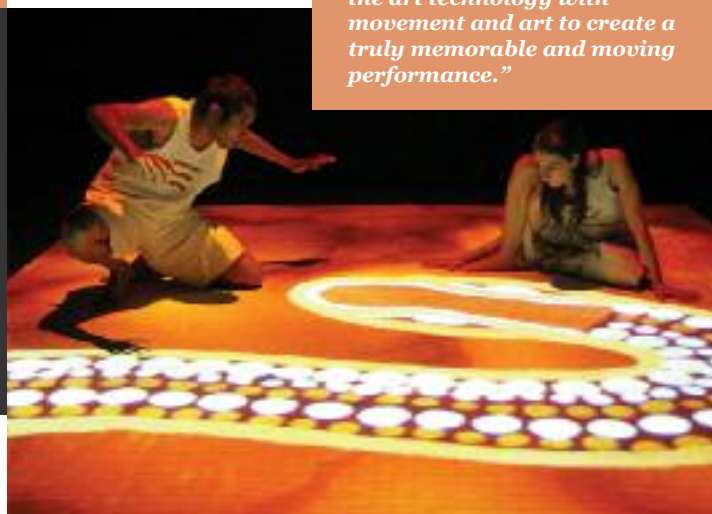
*Saltbush* is a collaboration between Italian, Aboriginal and non-Aboriginal Australian artists and follows the journey of two Aboriginal friends as they cross Australia on foot.

Children are invited to explore, play and dance with the performers as the landscape unfolds around them, providing a unique immersive experience where the audience can become part of this visually beautiful journey.

*"Children's theatre doesn't get any better than this... the perfect fusion of dance, art and breathtaking digital design."* ★★★★★ The Sunday Mail, Australia

Imagine Festival Director says:

*"Saltbush has that wonderful combination, using state of the art technology with movement and art to create a truly memorable and moving performance."*



### FESTIVAL PERFORMANCES

#### FESTIVAL THEATRE STUDIO

**Thursday 8 May** 13.30 & 19.00  
**Friday 9 May** 10.30  
**Saturday 10 May** 11.30 & 15.00  
**Sunday 11 May** 15.00  
**Monday 12 May** 10.30 & 13.30

Duration: **45 minutes**  
 Seating: **Cushions and benches**

After the performances at the Imagine Festival, *Saltbush* will be touring Scotland as part of the Glasgow 2014 Cultural programme. Please see the back cover of this brochure for more details.



[www.insitearts.com.au](http://www.insitearts.com.au)  
[www.tpo.it](http://www.tpo.it)



# If Only Rosa Could Do Magic

Some might say that Rosa has everything a girl could dream of.

AGE:  
5-9



Image: Håvard L. Johansen

### FESTIVAL PERFORMANCES

#### ARTSPACE

**Wednesday 7 May** 10.30 & 13.30  
**Thursday 8 May** 10.45 & 13.30  
**Friday 9 May** 10.30  
**Saturday 10 May** 14.30

Duration: **45 minutes**  
 Seating: **Theatre seating**

She has the sweetest dress, the loveliest hair, lots of pink toys and as much candy she could wish for, so why is she still sad?

Rosa often wonders if there is something wrong with her... She has no friends to play with and her parents are always away.

So, to pass the time, Rosa creates her own dream world filled with dragons and frogs and parents who understand and have time to be with her.

Imagine Festival Director says:

*"I saw this charming, funny and slightly bittersweet performance in Oslo where it had all of its audience (boys, girls, adults and old festival directors like myself) utterly entranced."*



KULTURRÅDET  
 Arts Council Norway



[www.katjalindeberg.com](http://www.katjalindeberg.com)



# Grandad and Me

AGE:  
5+

**A living storybook about loss, longing and the treasures of memory and imagination.**

In *Grandad and Me* we meet a little girl whose Grandad has gone, even though his favourite job was being her Grandad. Armed with her mouse, a hopeful heart and some jam sandwiches she traces his footsteps on a magical adventure: exploring fishing trawlers, meeting characterful Scottish seagulls, flying to the moon, and an adventure in Grandad's Italian ice cream van.

Using original music, choreography and animation inspired by the illustrations of Jon Bishop [AKA The Grey Earl] *Grandad and Me* creates a world in which anything is possible and the big questions are asked.

*"...beautifully crafted, whimsical mosaic of music, movement and animation"* The Herald

*Grandad and Me* is supported by Quality Production Funding from Creative Scotland and with development support from Imagine, The Touring Network and a donation towards the cost of touring by the Educational Institute of Scotland and was developed in association with Platform.

Imagine Festival Director says:

*"We're delighted to invite The Letter J to the Festival for the first time with this beautiful and moving tale."*

## FESTIVAL PERFORMANCES

### NORTH EDINBURGH ARTS

**Tuesday 6 May** 10.30 & 13.30  
**Wednesday 7 May** 10.45\* & 13.30  
**Saturday 10 May** 14.30  
**Monday 12 May** 10.30 & 13.30

Duration: **45 minutes**  
Seating: **Theatre seating**

\* Relaxed performance

Image: Neil Thomas Douglas

[www.theletterj.org](http://www.theletterj.org)



# Manxmouse

AGE:  
6+

**Imagine that you were a Manxmouse. A mouse without a tail, with huge ears, but you aren't grey, no, you are blue! Who will eat you? Who will chase you?**

The dog won't, the cat won't and the fox certainly will not! You are meant for the Manx cat, that's what all the animals say. That's your Destiny, there's nothing you can do about that! So Manxmouse goes to the Isle of Man to seek his fate.

*Manxmouse* is an adventurous play about a brave mouse featuring many puppets, animation and music. He may have failed as a mouse, but nevertheless, he succeeds very well at being Manxmouse!

*"A mouse to take home... You will really love this blue tail-less mouse."* ★★★★★ Theaterkrant

## FESTIVAL PERFORMANCES

### TRAVERSE THEATRE

**Friday 9 May** 10.15 & 19.00  
**Sunday 11 May** 12.00 & 15.00  
**Monday 12 May** 10.30\* & 13.30

Duration: **60 minutes**  
Seating: **Theatre seating**

\* Relaxed performance

Imagine Festival Director says:

*"A well told story told with huge amounts of fun and invention."*



Image: Edwin Deen

[www.kwatta.info](http://www.kwatta.info)





# Tetris

AGE:  
6+

From the company that brought you the gravity-defying *No Man is an Island* and *My True North* in 2013.

The energy and enthusiasm of the performers is contagious, delighting audiences as they watch what begins as a game of interlocking shapes unfold...

*Tetris* is a performance about fitting in to the group, and about doing your own thing. It is about being yourself and about working as a team. It doesn't ask you to change yourself to fit into the world, but how you can change the world to fit who you are.

**"the kind of in-your-face physicality that makes audiences of all ages crane forward in near-disbelief."** ★★★★★ The Herald on *No Man is an Island* and *My True North* Imagine Festival 2013

## FESTIVAL PERFORMANCES

### NORTH EDINBURGH ARTS

Thursday 8 May 10.30 & 13.30  
Friday 9 May 10.45\*  
Saturday 10 May 11.30

Duration: 45 minutes  
Seating: Theatre seating

\* Relaxed performance



Kingdom of the Netherlands

[www.arch8.org](http://www.arch8.org)

Image: Jeroen Bosch



Imagine Festival Director says:

**"Arch 8's performances strike a chord with audiences of all ages across the world. We are delighted to have them back."**



# Tiger Tale

AGE:  
7+

A high-octane dance performance about a family whose everyday world is turned upside down when a tiger comes to visit.

Something wild is prowling, she can hear it through her bedroom walls.

This is a story about a family finding their joy again: a daughter who longs for someone to play with; a mother who never goes outside; a father stuck in the daily routine.

It's chaotic, it's dangerous, but it's an awful lot of FUN as their guest slowly makes them remember what it is they love about one another.

Up close to the action the audience surrounds the family's home and embarks on a sensory adventure into a shifting world of colour, scent and explosive movement.

**"Tiger Tale is a magical dramatisation and a modern metaphor for the dual nature of human beings. Go wild and catch it somewhere!"** ★★★★★ EDINBURGH GUIDE

Imagine Festival Director says:

**"We are thrilled to be able to invite this brilliant performance to the Festival. A dance performance that has its audience, smiling, wide-eyed and open-mouthed!"**

## FESTIVAL PERFORMANCES

### FESTIVAL THEATRE STUDIO

Monday 5 May 19.00  
Tuesday 6 May 10.30 & 13.30  
Wednesday 7 May 10.30 & 13.30

Duration: 55 minutes  
Seating: Cushions and benches



[www.barrowlandballet.co.uk](http://www.barrowlandballet.co.uk)

Image: Brian Hartley





# Up to Speed

AGE:  
8+

**Up to Speed is a funny, moving and captivating tale about a boy and a girl and what it's like to be the odd one out!**

Barnaby is completely off the wall!  
Jade likes to be in control.  
But today Barnaby hasn't turned up for school.  
And it looks like Jade's got some explaining to do...

Have you ever met a person who is a little unusual? Someone whose mind seems to work a bit differently? Who surprises you? Who is funny and also fun to laugh at? That's what Barnaby is like.

Jade has marvelled and laughed at him, been surprised and confused by him. But he has also made her feel small. And she knows exactly how to get him back...

Commissioned by Imagineate, supported through the Scottish Government's Edinburgh Festivals Expo Fund and the City of Edinburgh Council.



# A True Tall Tale

AGE:  
8+

**An extraordinary fairytale set among celestial projections. Watch in wonder from your hammock below.**

A True Tall Tale is a beautifully told bedtime story, full of adventure and exploration.

*Don't go through the forest,  
robbers lie in wait and they will threaten your life.  
Nevertheless, the old monk and his young apprentice  
walk into the forest on an icy winter's day...  
for they have heard about a wonderful miracle  
that is almost too good not to be true.*

Freely adapted from Selma Lagerlöfs *The Legend of the Christmas Rose*.

**"Cocooned inside a canvas tent under a canopy of stars... A True Tall Tale offers us an armchair adventure, but the experience is deeply sensory: incense and ambient sounds waft through the air." ★★★★★ The Irish Times**

## FESTIVAL PERFORMANCES

### TRAVERSE THEATRE

**Thursday 8 May** 10.15 & 13.15  
**Saturday 10 May** 18.00  
**Sunday 11 May** 15.30\*  
**Monday 12 May** 10.45 & 13.15

Duration: **60 minutes**  
Seating: **Theatre seating**

\* *Audio-described and sign language interpreted performance*

Imagineate Festival Director says:

**"A warm welcome to the hugely talented Rosalind Sydney with her first show at the Imagineate Festival. Quality and fun. The perfect combination!"**



[www.uptospeedshow.net](http://www.uptospeedshow.net)



Image: eoin carey

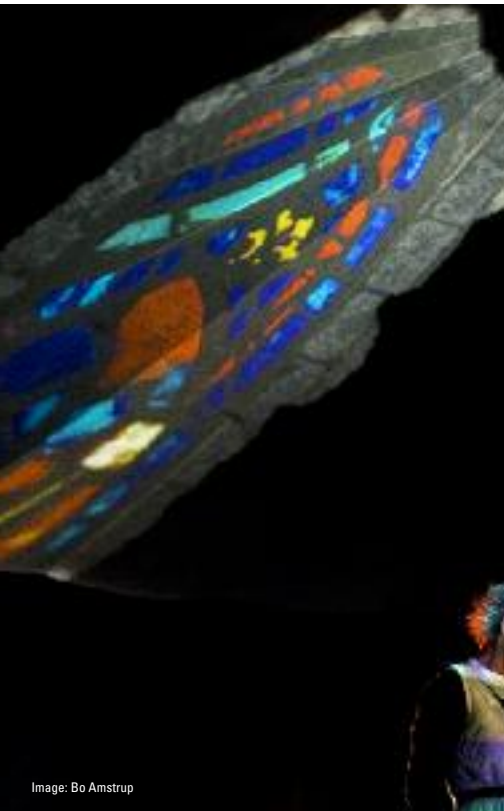


Image: Bo Amstrup

Imagineate Festival Director says:

**"Come in, lie back and prepare to be entranced. An experience you'll never forget!"**

## FESTIVAL PERFORMANCES

### SOUTH SIDE COMMUNITY CENTRE

**Thursday 8 May** 10.30 & 13.30  
**Friday 9 May** 10.30 & 19.00  
**Saturday 10 May** 11.45 & 15.00

Duration: **45 minutes**  
Seating: **Hammocks**

*This show is made especially for a small audience!*

[www.gruppe38.dk](http://www.gruppe38.dk)

# The Adventures of Alvin Sputnik: Deep Sea Explorer

AGE:  
9 +

A highly imaginative fusion of animation, puppetry, projections and music, telling the tale of a quiet hero, Alvin, and the search for his lost love in the seemingly endless depths of the ocean.

Created by Tim Watts and having charmed audiences worldwide, this exquisite one-man show is a heart-warming and beautiful story of love and loss and a remarkable pocket masterpiece of invention, staging and performance.

*"absorbing, touching and uplifting"* The Australian  
*"...an endearing Australian solo show...akin to a theatrical Wall-E"* New York Times

Winner - Outstanding Solo Show New York Fringe Festival  
Winner - Best Theatre Production Auckland Fringe

Imagine Festival Director says:

*"I'm so pleased to finally be able to bring this award-winning, globe-trotting show to the Imagine Festival. Believe the hype. It is that good!"*

## FESTIVAL PERFORMANCES

### TRAVERSE THEATRE

Tuesday 6 May 10.15 & 13.15  
Wednesday 7 May 10.45 & 13.30  
Thursday 8 May 19.00  
Friday 9 May 19.15  
Saturday 10 May 12.00 & 15.00

Duration: 45 minutes  
Seating: Theatre seating

After the performances at the Imagine Festival, *The Adventures of Alvin Sputnik: Deep Sea Explorer* will be touring Scotland as part of the Glasgow 2014 Cultural programme. Please see the back cover of this brochure for more details.



Image: Michelle Robin Anderson

# O Snap

AGE:  
12 +

Rhythm is a dancer. Freedom is a rhythm, shared. Together, we got the beat.



Imagine Festival Director says:

*"Fabulous choreography that just hits the spot with audiences. A lovely example of action speaking louder than words."*

## FESTIVAL PERFORMANCES

### TRAVERSE THEATRE

Tuesday 6 May 10.30 & 13.00  
Wednesday 7 May 19.00

Duration: 55 minutes  
Seating: Theatre seating

Who are we, what do we want, and where do we belong? From the makers of *No Man is An Island* and *My True North*, *O Snap* is a dance performance about finding your own identity in an overloaded world.

The road to maturity is full of stumbling blocks, but luckily you are not alone. You've got friends. Not one-click-on-Facebook, but real friends. There-for-you-no-matter-what friends.

*"breath-taking... dazzling performance."* ★★★★★  
Theaterkrant

Image: Anna van Kooij

# Festival Diary

Monday 5th - Monday 12th May 2014

Show	Age	Time (end time)	Venue
Tiger Tale	7 +	19.00 (19.55)	Festival Theatre Studio
Cocoon	2 - 5	09.30 (10.15)	Church Hill Studio
Alvin Sputnik	9 +	10.15 (11.00)	Traverse Theatre
Grandad and Me	5 +	10.30 (11.15)	North Edinburgh Arts
O Snap	12 +	10.30 (11.25)	Traverse Theatre
Tiger Tale	7 +	10.30 (11.25)	Festival Theatre Studio
Cocoon	2 - 5	11.30 (12.15)	Church Hill Studio
O Snap	12 +	13.00 (13.55)	Traverse Theatre
Alvin Sputnik	9 +	13.15 (14.00)	Traverse Theatre
a small story	2 - 4	13.30 (14.05)	Church Hill Studio
Grandad and Me	5 +	13.30 (14.15)	North Edinburgh Arts
Tiger Tale	7 +	13.30 (14.25)	Festival Theatre Studio
a small story	2 - 4	15.00 (15.35)	Church Hill Studio
a small story	2 - 4	09.30 (10.05)	Church Hill Studio
Not Now Bernard	2 - 5	10.15 (11.05)	Traverse Theatre
If Only Rosa Could Do Magic	5 - 9	10.30 (11.15)	Artspace
Tiger Tale	7 +	10.30 (11.25)	Festival Theatre Studio
Alvin Sputnik	9 +	10.45 (11.30)	Traverse Theatre
Grandad and Me	5 +	10.45 (11.30)*	North Edinburgh Arts
a small story	2 - 4	11.30 (12.05)	Church Hill Studio
Not Now Bernard	2 - 5	13.15 (14.05)	Traverse Theatre
Alvin Sputnik	9 +	13.30 (14.15)	Traverse Theatre
Cocoon	2 - 5	13.30 (14.15)	Church Hill Studio
Grandad and Me	5 +	13.30 (14.15)	North Edinburgh Arts
If Only Rosa Could Do Magic	5 - 9	13.30 (14.15)	Artspace
Tiger Tale	7 +	13.30 (14.25)	Festival Theatre Studio
Cocoon	2 - 5	15.00 (15.45)	Church Hill Studio
O Snap	12 +	19.00 (19.55)	Traverse Theatre
Cocoon	2 - 5	09.30 (10.15)	Church Hill Studio
Up to Speed	8 +	10.15 (11.15)	Traverse Theatre
A True Tall Tale	8 +	10.30 (11.15)	South Side Community Centre
Tetris	6 +	10.30 (11.15)	North Edinburgh Arts
Not Now Bernard	2 - 5	10.30 (11.20)	Traverse Theatre
If Only Rosa Could Do Magic	5 - 9	10.45 (11.30)	Artspace
Cocoon	2 - 5	11.30 (12.15)	Church Hill Studio
Up to Speed	8 +	13.15 (14.15)	Traverse Theatre
a small story	2 - 4	13.30 (14.05)	Church Hill Studio
A True Tall Tale	8 +	13.30 (14.15)	South Side Community Centre
If Only Rosa Could Do Magic	5 - 9	13.30 (14.15)	Artspace
Saltbush	4 - 8	13.30 (14.15)	Festival Theatre Studio
Tetris	6 +	13.30 (14.15)	North Edinburgh Arts
Not Now Bernard	2 - 5	13.30 (14.20)*	Traverse Theatre
a small story	2 - 4	15.00 (15.35)	Church Hill Studio
Alvin Sputnik	9 +	19.00 (19.45)	Traverse Theatre
Saltbush	4 - 8	19.00 (19.45)	Festival Theatre Studio

Show	Age	Time (end time)	Venue
Manxmouse	6 +	10.15 (11.15)	Traverse Theatre
A True Tall Tale	8 +	10.30 (11.15)	South Side Community Centre
If Only Rosa Could Do Magic	5 - 9	10.30 (11.15)	Artspace
Saltbush	4 - 8	10.30 (11.15)	Festival Theatre Studio
Too Many Penguins	1 - 4	10.30 (11.15)	Church Hill Studio
Tetris	6 +	10.45 (11.30)*	North Edinburgh Arts
a small story	2 - 4	13.30 (14.05)	Church Hill Studio
a small story	2 - 4	15.00 (15.35)	Church Hill Studio
A True Tall tale	8 +	19.00 (19.45)	South Side Community Centre
Manxmouse	6 +	19.00 (20.00)	Traverse Theatre
Alvin Sputnik	9 +	19.15 (20.00)	Traverse Theatre
a small story	2 - 4	10.30 (11.05)	Church Hill Studio
Saltbush	4 - 8	11.30 (12.15)	Festival Theatre Studio
Tetris	6 +	11.30 (12.15)	North Edinburgh Arts
A True Tall tale	8 +	11.45 (12.30)	South Side Community Centre
Not Now Bernard	2 - 5	11.45 (12.35)	Traverse Theatre
Alvin Sputnik	9 +	12.00 (12.45)	Traverse Theatre
a small story	2 - 4	12.30 (13.05)	Church Hill Studio
Grandad and Me	5 +	14.30 (15.15)	North Edinburgh Arts
If Only Rosa Could Do Magic	5 - 9	14.30 (15.15)	Artspace
Too Many Penguins	1 - 4	14.30 (15.15)	Church Hill Studio
Not Now Bernard	2 - 5	14.45 (15.35)	Traverse Theatre
A True Tall tale	8 +	15.00 (15.45)	South Side Community Centre
Alvin Sputnik	9 +	15.00 (15.45)	Traverse Theatre
Saltbush	4 - 8	15.00 (15.45)	Festival Theatre Studio
Too Many Penguins	1 - 4	16.30 (17.15)	Church Hill Studio
Up to Speed	8 +	18.00 (19.00)	Traverse Theatre
Manxmouse	6 +	12.00 (13.00)	Traverse Theatre
Too Many Penguins	1 - 4	13.30 (14.15)	Church Hill Studio
Saltbush	4 - 8	15.00 (15.45)	Festival Theatre Studio
Manxmouse	6 +	15.00 (16.00)	Traverse Theatre
Too Many Penguins	1 - 4	15.30 (16.15)	Church Hill Studio
Up to Speed	8 +	15.30 (16.30)**	Traverse Theatre
Too Many Penguins	1 - 4	09.30 (10.15)	Church Hill Studio
Grandad and Me	5 +	10.30 (11.15)	North Edinburgh Arts
Saltbush	4 - 8	10.30 (11.15)	Festival Theatre Studio
Manxmouse	6 +	10.30 (11.30)*	Traverse Theatre
Up to Speed	8 +	10.45 (11.45)	Traverse Theatre
Too Many Penguins	1 - 4	11.30 (12.15)	Church Hill Studio
Up To Speed	8 +	13.15 (14.15)	Traverse Theatre
Grandad and Me	5 +	13.30 (14.15)	North Edinburgh Arts
Saltbush	4 - 8	13.30 (14.15)	Festival Theatre Studio
Manxmouse	6 +	13.30 (14.30)	Traverse Theatre

\* Relaxed performance

These performances are designed for anyone who would benefit from a more relaxed performance environment; especially for people with profound and complex learning or sensory needs. Audience members are free to come and go and make noise if they want to.

\*\* Audio-described and sign language interpreted performance

# Venue Information

## ARTSPACE

11 Harewood Road,  
Edinburgh, EH16 4NT

- accessible toilets and baby changing facility
- free parking
- induction loop
- lift access
- street level access
- wheelchair spaces

### Bus Routes:

2, 14 & 30

Buses stop a short walk away from the venue.

## FESTIVAL THEATRE STUDIO

Potterrow, Edinburgh EH8 9BL  
(Entrance via Potterrow)  
[www.edtheatres.com](http://www.edtheatres.com)

- accessible toilets and baby changing facility
- assistance dogs welcome
- automatic doors at Potterrow entrance
- family-friendly bar/café (at the Festival theatre a short walk from the Studio)
- induction loop
- lift with braille signage and audible announcer
- street level access
- wheelchair spaces

### Bus Routes:

Nicolson Street: 3, 3A, 5, 7, 8,  
14, 21, 29, 31, 33, 37, 37A & 49  
Potterrow: 2, 41, 42 & 67

## SOUTH SIDE COMMUNITY CENTRE

117 Nicolson St,  
Edinburgh, EH8 9ER

- accessible toilets
- family-friendly café
- induction loop
- lift access
- street level access
- wheelchair spaces

### Bus Routes:

3, 5, 7, 8, 29, 31, 37, 47, & 49

Metered on-street parking

## CHURCH HILL THEATRE STUDIO

33 Morningside Road,  
Edinburgh EH10 4DR  
[www.edinburgh.gov.uk](http://www.edinburgh.gov.uk)

- accessible toilets
- family-friendly bar/café
- induction loop
- lift access
- street level access
- wheelchair spaces

### Bus Routes:

11, 16 & 23

Metered on-street parking

## NORTH EDINBURGH ARTS (NEA)

15a Pennywell Court,  
Edinburgh EH4 4TZ  
[www.northedinburgharts.co.uk](http://www.northedinburgharts.co.uk)

- accessible toilets
- family-friendly café
- free parking
- induction loop
- lift access
- street level access
- wheelchair spaces

### Bus Routes:

24, 27, 32 & 37 all stop at Muirhouse Shopping Centre. The arts centre can be accessed by walking through the shopping centre.

## TRAVERSE THEATRE

10 Cambridge Street,  
Edinburgh EH1 2ED  
[www.traverse.co.uk](http://www.traverse.co.uk)

- accessible toilets and baby changing facility
- assistance dogs welcome
- automatic doors at Cambridge Street entrance
- family-friendly bar/café
- induction loop
- infra-red hearing facility
- lift with braille signage and audible announcer
- street level access
- wheelchair spaces

### Bus Routes:

1, 10, 11, 15/A, 16, 24, & 34 stop adjacent to the Traverse on Lothian Road.

Many others are a short walk away. There are taxi ranks and car parking nearby.

# Imagine Festival Family Fringe

**SATURDAY 10 & SUNDAY 11 MAY 2014**

**SATURDAY 11.00 - 18.00 & SUNDAY 11.00 - 17.00**

**TRAVERSE THEATRE CAFÉ BAR • FREE, NO TICKET REQUIRED**

**Prepare to be entertained. Prepare to be charmed. Prepare to be surprised.**

After previous successful Fringe events, we are pleased to offer an invitation for families to join us in the Traverse Theatre Café Bar for our fourth Family Fringe.

Imagine Festival's Family Fringe gives local artists and performers opportunities to create, perform and experiment with new ideas for family audiences. Fun packed and full of variety, this programme of short performances is always a very popular event and takes place in the nooks, crannies and open spaces of the Traverse Café Bar during the Festival weekend.

A number of the artists involved in last year's Fringe have gone on to develop their performances into productions for children and young people.

Arrive early before a show or stay a little longer afterwards and enjoy this free event with your family.

EDINBURGH INTERNATIONAL  
**science  
Festival**

**THIS EASTER, SPEND THE DAY  
AT THE SCIENCE FESTIVAL**

**5-20 APRIL 2014**

Book your day pass and embark on a spectacular scientific adventure at City Art Centre



Join the solar trail at Summerhall with sensational shows and interactive workshops running daily.



**ONLINE BOOKING: SCIENCEFESTIVAL.CO.UK**

**BOOKING HOTLINE: 0844 557 2686**



Imagine is delighted to be touring *The Adventures of Alvin Sputnik: Deep Sea Explorer* and *Saltbush* to venues across Scotland as part of the Glasgow 2014 Cultural Programme.

The Cultural Programme is a partnership between the Glasgow 2014 Organising Committee, Glasgow Life and Creative Scotland. [www.glasgow2014.com/culture](http://www.glasgow2014.com/culture)

For further details and to book your On Tour tickets, please use the relevant venue booking details below.



The Last Great Hunt presents

## The Adventures of Alvin Sputnik: Deep Sea Explorer

### Platform, Easterhouse, Glasgow

Monday 12 May at 13.30 & 19.00  
Box Office: 0141 276 9696 [Option 1]  
[www.platform-online.co.uk](http://www.platform-online.co.uk)

### Carnegie Hall, Dunfermline

Tuesday 13 May at 13.30  
Box Office: 01383 602302  
[www.onfife.com](http://www.onfife.com)

### Lanark Memorial Hall, Lanark

Wednesday 14 May at 13.30  
Box Office: 01555 667999  
[www.sllcboxoffice.co.uk](http://www.sllcboxoffice.co.uk)

### Aboyne Academy, Aboyne, Aberdeen

Friday 16 May at 13.30  
Box Office: 01330 825431  
[www.woodendbarn.co.uk](http://www.woodendbarn.co.uk)

### The Lemon Tree, Aberdeen

Sunday 18 May at 14.00  
Box Office: 01224 641122  
[www.aberdeenperformingarts.com](http://www.aberdeenperformingarts.com)

### Paisley Arts Centre, Paisley

Tuesday 20 May at 13.30  
Booking: Catherine Harbon, Cultural  
Coordinator on 0141 618 5098

### Perth Concert Hall, Perth

Wednesday 21 May at 13.30  
Box Office: 01738 621031  
[www.horsecross.co.uk](http://www.horsecross.co.uk)

### Beacon Arts Centre, Greenock

Thursday 22 May at 13.30 & 19.00  
Box Office: 01475 723 723  
[www.beaconartscentre.co.uk](http://www.beaconartscentre.co.uk)

### macrobert, Stirling

Saturday 24 May at 11.00  
Box Office: 01786 466666  
[www.macrobert.org](http://www.macrobert.org)

Compagnia TPO & Insite Arts present

## Saltbush - Children's Cheering Carpet



### Beacon Arts Centre, Greenock

Thursday 15 May  
at 13.00 & 19.00  
Box Office: 01475 723 723  
[www.beaconartscentre.co.uk](http://www.beaconartscentre.co.uk)

### Adam Smith Theatre, Kirkcaldy

Sunday 18 May at 14.00  
Box Office: 01592 583302  
[www.onfife.com](http://www.onfife.com)

### RISE Dance Festival, Universal Hall, Findhorn

Wednesday 21 May  
at 09.30 & 11.30  
Box Office - 01309 690110  
Schools Booking -  
01309 691661  
[www.bodysurfscotland.co.uk](http://www.bodysurfscotland.co.uk)

### Tron Theatre, Glasgow

Friday 23 May at 14.30  
Saturday 24 May  
at 11.30 & 14.30  
Box Office: 0141 552 4267  
[www.tron.co.uk](http://www.tron.co.uk)