

Second Proposed Local Development Plan

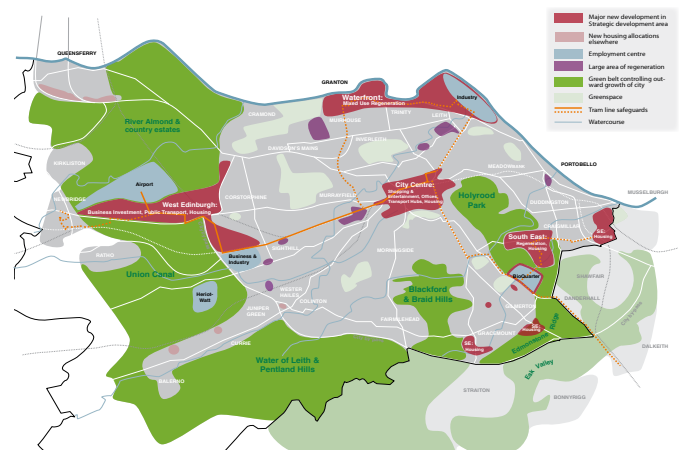
The Second Proposed Local Development Plan was approved by Planning Committee on 19 June 2014.

The Plan will now be published for a formal period of representations running for six weeks from 22 August until 3 October 2014. Everyone who submitted responses to the First Proposed Plan or the Main Issues Report will be invited to make representations. We will also notify properties neighbouring the proposals in the Second Proposed Plan as required by legislation.

Drop-in sessions to help the public understand the Second Proposed Plan and how they can make representations if they wish have been organised. These sessions will be held near the areas where there are new housing proposals. Further details on the drop-in sessions will be available in the Development Plan Scheme.

You can view the Second Proposed Plan, its supporting documents and the Development Plan Scheme on our Local Development Plan [webpages](#).

contact: ben.wilson@edinburgh.gov.uk



Message from the Convener

Edinburgh is a successful, growing city but this brings a huge demand for places where people can live. We have brownfield land capable of accommodating more than 24,000 new homes, and encouraging these sites to be developed is a key Council commitment. Unfortunately, there is not enough to meet the demand for new homes in our city.

The Council's Proposed Local Development Plan identifies land in the Green Belt where development is acceptable in principle. Releasing land in the green belt is always going to be contentious and I understand the concerns that communities have when they are faced with such proposals. However, we have no choice but to make these tough decisions. If we don't produce a Plan that addresses the demand for housing we are at risk of planning proposals being approved on appeal in locations that we have no control over which makes it more difficult to plan infrastructure and services.

I would like to thank those who have already engaged in this long and complex process, and there will be an opportunity to comment on our Proposed Plan over the summer. Although it will not be possible to please everyone, looking ahead I am keen to look at ways that we can change the debate from which green fields can be built on to which are the green spaces that must be preserved.

Cllr. Ian Perry
Convener, Planning Committee

contact: ian.perry@edinburgh.gov.uk



Strategic Development Plan update

The *SESplan Supplementary Guidance* was approved by the SESplan Committee on 14 March and subsequently ratified by all of the SESplan constituent councils. The Supplementary Guidance was submitted to Scottish Ministers for a 28 day period of ministerial consideration. Ministers required a change to calculation of the five year land supply. This was approved by the SESplan committee at the end of June, and will be ratified by all member authorities by mid-September.

The Supplementary Guidance sets Edinburgh's housing land requirement at 29,510 houses. The majority of these will be built on existing housing sites, land with planning permission or identified in previous plans. The additional housing sites have been identified in a second Proposed Local Development Plan which was approved by the Planning Committee on 19 June.

contact: keith.miller@edinburgh.gov.uk

Vacant and derelict land – can you help?



The Council will soon be undertaking the annual vacant and derelict land survey on behalf of the Scottish Government. The 2013 survey can be viewed on our [website](#). Sites need to be at least 0.1 hectares (100 square metres) and have been previously developed at some point.

Do you know of any sites not in the last survey which should be included? If so, please do email us your suggestions.

contact: simon.antrobus@edinburgh.gov.uk

Vision for Planning in Scotland

The National Planning Framework 3 (NPF) and Scottish Planning Policy (SPP) were officially launched by the Scottish Government on 23 June 2014. The NPF and SPP will shape long term economic development and local planning policy.

The vision is for a Scotland which is:

- A successful, sustainable place
- A low carbon place
- A natural, resilient place
- A connected place

Together NPF and SPP are intended to help the planning system to deliver this vision. The NPF is a long term strategy for Scotland. To help deliver the strategy 14 National Developments are identified within the NPF, including further development of Edinburgh Airport and the surrounding area.

SPP sets out national planning policies which relate to the preparation of development plans, design of development and determination of planning applications. It is intended to promote consistency in the application of policy across Scotland.

Further information is available on the [Scottish Government Website](#).

contact: lindsay.robertson3@edinburgh.gov.uk

Southfield Estate Proposed Conservation Area

On 15 May 2014, the Planning Committee approved a *draft character appraisal* of the Southfield Estate as a basis for a consultation. Having an agreed character appraisal in place is an essential initial step in the process of conservation area designation.

The designation would make the Southfield Estate unique, as the most recently built conservation area in Scotland.

There will be an exhibition of the proposals at the *Drumrae Library Hub* from 30 June to 11 July. There will also be an opportunity to discuss the proposals with Council representatives at the Hub between 3pm and 7:30pm on Wednesday 2 and 9 July 2014.

contact: jack.gillon@edinburgh.gov.uk



Expanding Edinburgh's Green Networks

City of Edinburgh Council was one of the first public bodies in Scotland to champion a Local Biodiversity Action Plan, as lead partner in the Edinburgh Biodiversity Partnership, back in 2000. All public bodies now have a legal duty towards biodiversity conservation and must report to the Scottish Government by the end of 2014 on how they are meeting this duty.

This is being partly achieved through a partnership green network project to expand woodlands in the Pentland Hills, supported by the *Edinburgh & Lothians Greenspace Trust*. Funding has been secured to create over 60 hectares of new woodlands across Swanston, Dreghorn and Bonaly Country Park on a mix of private and public land.

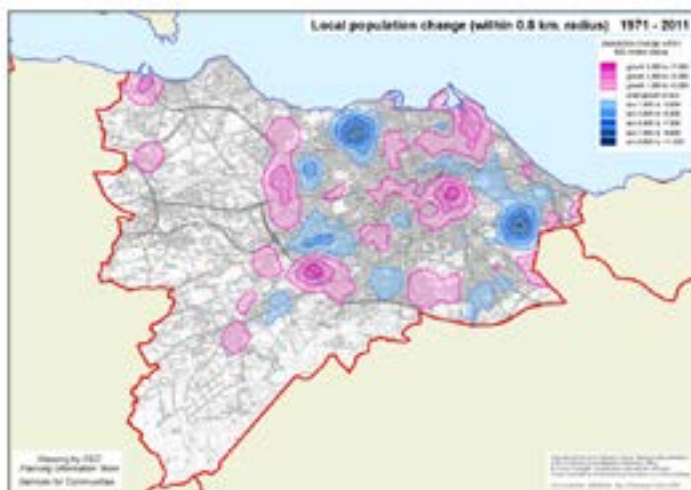
Fencing work is currently underway at Bonaly with planting scheduled for the autumn, whilst 11 hectares of trees have already been planted at Swanston. A Centenary Woodland commemorating the 100th anniversary of the start of World War One, and developed in consultation with local school children, will be planted over the winter.

Increasing green networks by creating new woodland has many environmental benefits. These include creating attractive landscapes for people, increasing wildlife habitat and helping to reduce the impacts of climate change. This local woodland creation project also contributes to the delivery of a *Central Scotland Green Network* which is a Scottish Government priority under the National Planning Framework.

contact: caroline.peacock@edinburgh.gov.uk



2011 Census results for Edinburgh



The Council makes good use of census data to ensure that policies and planning decisions take account of the latest population trends. This encompasses not just population growth, but changing geographical distribution, age profile, and other characteristics such as car ownership and household size.

To complement the data published by *National Records of Scotland* (who are responsible for the census in Scotland), the Planning Service has undertaken its own analysis of the 2011 Census results with a specific focus on Edinburgh. These findings have now been published on the Council's *website*.

The information includes local area profiles for council wards, community council areas and conservation areas. It also includes a number of city-wide analyses which look, for example, at how Edinburgh compares with other cities

across the UK, and long-term trends based on previous census results. There are also reports on specific topics such as travel, students and ethnic composition.

Hopefully this is information which will prove valuable for local residents, organisations and businesses. Do take a look – some of the results are quite revealing and underline the pace of change in the city!

contact: graeme.gainey@edinburgh.gov.uk

Street advertising in the digital age



A new advertising and street furniture contract has been awarded to JC Decaux, who will assist the Council in developing a pedestrian wayfinding system for the city. This is part of a wider aspiration to improve the quality of the City's public realm and to facilitate the safe and convenient movement of people around the city centre by walking, cycling and public transport.

The use of static and moving digital images for promotion and advertising is increasing as the cost of digital display panels become affordable to outdoor media companies. Digital panels allow adverts to be displayed that are relevant to their location, time specific, frequently changed and managed remotely. In Edinburgh, a trial of small format digital advertising is taking place on bus shelters on Princes Street and in Morningside to assess the impact of frequently changing adverts and

the use of moving images at varying speeds on visual amenity and public safety. The Council is also monitoring the use of a small number of large format digital adverts presently in operation.

These trials are important as they will help in assessing new applications for both digital and conventional advertisements. The majority of these applications will come forward this year as part of a city-wide replacement and improvement programme of street furniture, mainly bus stops and advertising hoardings on Council owned land and buildings.

contact: andrew.sikes@edinburgh.gov.uk

100 Years of Planning Edinburgh

The Council is continuing to develop its 100 Years of Planning Edinburgh exhibition which will go on show in the late summer. The project is revealing some fascinating insight into how the city has developed over the last century with big changes in how we live, get about and use our landscape.

The exhibition is based around the five themes of housing, plans, transport, landscape and conservation. It will also identify key figures in planning for each decade over the past one hundred years. The exhibition will be on view in Waverley Court's *Urban Room* and will tour venues throughout the city.

contact: will.garrett@edinburgh.gov.uk

World Heritage Site update

Following last year's success, Edinburgh World Heritage and the Traditional Building Forum have again made it in to the *Festival Fringe Programme*. All events take place at *EWH HQ* in Bakehouse Close between 12 – 14 August, and are free to attend. They include guided tours, talks and demonstrations on the challenge of providing appropriate skills and materials for the upkeep of our traditional buildings.

Something else to look out for this August is the opening of *High School Yard Steps*. A collaborative project between City of Edinburgh Council, University of Edinburgh and Edinburgh World Heritage will see the steps leading from Cowgate up to High School Yards opened to the public for the first time in over 10 years. Wrought iron gates have been commissioned for the project (a traditional material that is no longer normally produced), stone repairs are underway, and an art installation by Edinburgh-born artist Callum Innes will enliven the steps. As people climb, their movement will be captured by an infrared camera and their silhouette will be projected on to a large LED mesh screen.

contact: jenny.bruce@edinburgh.gov.uk



For subscription requests and general enquiries regarding Planning News, contact:

simon.antrobus@edinburgh.gov.uk

Follow us on [Twitter](#) and via our [blog](#)



EDINBURGH
THE CITY OF EDINBURGH COUNCIL