

**Leith**  
festival

**2019**

I **Love**  
**Leith**

**8-16 JUNE**

**I♥Leith**

# ARTISTS, DESIGNERS, & HUMANS.

We are here, to absorb  
your printing needs!

## PrintSponge

[www.printsponge.com](http://www.printsponge.com)

Leith/Stockbridge



# WELCOME TO YOUR COMMUNITY FESTIVAL!

On the following pages you will find your guide to Leith Festival, 8 - 16 June. Leith Festival is run by the people of Leith, for the people (and dogs) of Leith. This year we have a bumper harvest; 66 events, 50 of which are free to attend.

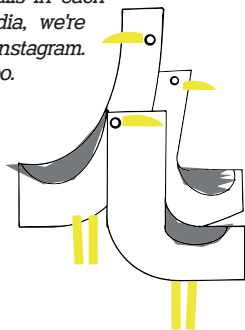
We are not a faceless corporate events company, we are a local charity who aim to make the arts accessible to all. Leith Festival has been entertaining people in Edinburgh's Port for over a century... So dive in!



## The Leith Festival Team

*For ticketed events, please see contact details in each individual listing. Join us on social media, we're @leithfestival on Facebook, Twitter and Instagram. Be sure to post your favourite festival photos too.*

Leith Festival Association  
1st Floor, 17 Academy Street  
Leith, EH6 7EE  
Scottish Charity Number: SC283758  
T: 0131 629 1214  
E: [office@leithfestival.com](mailto:office@leithfestival.com)



**Every penny you spend at SDX goes directly to the artists and supports local economy**

If you like what we do, tell our story



Ocean Terminal,


Ocean Drive, Leith, EH6 6JJ



[www.scottishdesignexchange.com](http://www.scottishdesignexchange.com)



**Sláinte, Twoje zdrowie,  
Skål, i sveikata,  
Salud, Santé!!!**

**Cheers from all our Rosey staff** 

23/24 Sandport Place Leith EH6 6EW  
t: 0131 476 5268 e: [info@roseleaf.co.uk](mailto:info@roseleaf.co.uk)  
[www.roseleaf.co.uk](http://www.roseleaf.co.uk)

# LEITH FESTIVAL WOULD LIKE TO WARMLY THANK OUR VALUED SUPPORTERS AND SPONSORS

## SPONSORS

Royal Yacht Britannia, Unite the Union, Jim Wilkie, Leith Dockers Club, Mackenzie School of English, Baillie Gifford, Viridor, Roseleaf Bar and Cafe, Scottish Design Exchange, Watermans Legal, LeithLate, The Skinny and Los Cardos.

## SUPPORTERS

Bare Branding, Malmaison Hotel, Queen Charlotte Rooms, Crombie's of Edinburgh, Taylor's Fun Fair, Old Dr Bell's Baths, The Leather Magazine and PrintSponge.

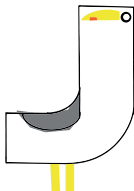
## FRIENDS

The Leith Festival Board, The Volunteers, Citizen Curator, Banana Row, Citadel Youth Centre, Cowan and Partners, Leith Academy, Leith Festival Members, Thistle Decorators, Griffen Fitness, Keith Taylor, Bob Lawson, Amy-Beth Johnson, Bob Downie, Marshall Bain.

Programme design by Darren Smith. Done as a mark of honour to his late father Peter Smith. Thanks to Bernie Reid for the seagulls. All images are copyright to Darren Smith. I Love Leith.



# WHAT'S ON



## LIVING MEMORY ASSOCIATION PRESENTS...

THELMA FM is a brand new  
Leith based internet radio station focusing on  
'Records and Reminiscence', launching 7th June.  
Tune in online at [https://streema.com/radios/  
THELMA\\_FM](https://streema.com/radios/THELMA_FM), [https://streamitter.com/thelma-fm-  
13727.php](https://streamitter.com/thelma-fm-13727.php) or from <http://livingmemory.org.uk>

## MUSIC

### CLUB NITTY GRITTY NEIL YOUNG SPECIAL

Nitty Gritty present a  
Neil Young Special: Only Leith Can Break Your  
Heart, on festival eve.

7 June | 6pm – 1am | **FREE** | The Village, 16 South Fort  
St, EH6 4DN | [www.theheartbreakdiet.weebly.com](http://www.theheartbreakdiet.weebly.com)

### A WINDOW TO LEITH

Exhibition of papercuts  
exploring some well-known views of Leith  
by Emma Westwater.

8-15 June | 10am – 1am | **FREE** | Roseleaf Bar & Cafe,  
23/24 Sandport, EH6 6EW | [www.designbysource](http://www.designbysource)

## EXHIBITION

## LEITH MARKET

## MARKET

Meet local traders, with the friendliest shopping around. Every Saturday.  
8 & 15 June | 10am-5pm | **FREE** | Dock Place, EH6 6LU  
[www.stockbridgemarket.com/leith.html](http://www.stockbridgemarket.com/leith.html)

## EXHIBITION

### EXPOSED 19 - EDINBURGH COLLEGE PHOTOGRAPHY

Showcase exhibition for final year students from Edinburgh College.  
8, 10 – 15 June | 10am-5pm | **FREE** | Out of the Blue Drill Hall, 36 Dalmeny St, EH6 8RG  
[www.outoftheblue.org.uk](http://www.outoftheblue.org.uk)

### LAPIDARY DEMONSTRATION AND DISPLAYS

## EXHIBITION

Discover Scottish minerals; traditional crafts of lapidary, silverwork, gold panning.  
8 June, 10:30 - 4pm (plus gold panning) | 9 June, 10:30 - 4pm (plus gold panning) | 10 June, 7.30pm - 9.30pm | 11 June, 10:30 - 3:30pm, 7pm - 9:30pm | 12 June, 7pm - 9:30pm | 13 June, 10:30am - 3pm | 14 June, 7.30pm - 9.30pm | 15 June, 10:30 - 4pm (plus gold panning) | **FREE** | The Scottish Lapidary Club, 20 Maritime Ln, EH6 6RZ | [www.lapidary.org.uk](http://www.lapidary.org.uk)

## TRINITY HOUSE OPEN DAY

## EXHIBITION

Visit Leith's maritime museum  
and uncover the stories behind objects.

8 June | 10:30am-4pm | **FREE** | Trinity House,  
99 Kirkgate, EH6 6BJ | [www.historicenvironment.scot](http://www.historicenvironment.scot)

## MUSIC

## BRUNCHEON! FEATURING THE SOUND OF MUESLI

Live music and brunch at the Drill Hall Arts Cafe.

8 June | 11:30am-2:30pm | **FREE** | Out of the Blue Drill Hall,  
36 Dalmeny St, EH6 8RG | [www.outoftheblue.org.uk](http://www.outoftheblue.org.uk)

## 'QUEENS FOR A DAY' POP-UP

## EXHIBITION

Pop by the pop-up exhibition on  
the history of the Pageant on Gala day. Watch the  
Parade as it makes its way past at midday.

8 June | 10am-12pm | **FREE** | Griffen Fitness, 3 Balfour  
Street, EH6 5BY | [www.citizencurator.com](http://www.citizencurator.com)

## FAMILY

## EDINBURGH FESTIVAL OF CYCLING

EdFoC invites cyclists, large  
and small, to join in Pageant, and will be running  
a 'best dressed bike' at beginning of parade.

Prizes donated by Leith Cycle Co.

8 June | 12pm-12.45pm | **FREE** | Pilrig Park-Leith Links,  
EH6 7QR | [www.edfoc.org.uk](http://www.edfoc.org.uk)



## **4 DOORS DOWN**

Unique public art exhibit  
trial on 4 doors in Leith.

8-16 June | 8am-10pm **FREE** | 16, 20 & 21 Maritime Ln,  
41 Maritime St, EH6 6RZ [www.qualityyard.co.uk](http://www.qualityyard.co.uk)

**EXHIBITION**

**EXHIBITION**

## **"CAPS AFF" ALL-FEMALE GRAFITTI JAM**

See Quality Yard get repainted by Scotland's finest  
female street artists. Part of LeithLate19.

8 and 9 June | 11am-6pm (4pm on 9/6) | **FREE**  
Quality Yard Art Studios, 20 Maritime Ln, EH6 6RZ  
[www.qualityyard.co.uk](http://www.qualityyard.co.uk)

**EXHIBITION**

## **OPEN STUDIOS AT QUALITY YARD ART SPACE**

Six artists new studios and stand-alone exhibition.

8 and 9 June | 11am-5pm (4pm on 9/6) | **FREE** | Quality  
Yard Art Studios, 20 Maritime Ln, EH6 6RZ  
[www.qualityyard.co.uk](http://www.qualityyard.co.uk)

## **THE CUBE PROJECT**

Come along to Quality Yard  
and doodle on a cube - it's an ongoing  
participatory artwork.

8 June | 11am-6pm | **FREE** | Quality Yard Art Studios,  
20 Maritime Ln, EH6 6RZ | [www.qualityyard.co.uk](http://www.qualityyard.co.uk)

**EXHIBITION**

## OPEN STUDIO WEEKEND

EXHIBITION

Affordable original art: painting, sculpture and prints, with demonstration.

8 and 9 June | 12pm-5pm | **FREE** | Studio 52,  
52 Albion Rd, EH7 5QZ | [www.lennon-art.co.uk](http://www.lennon-art.co.uk)

## FILM

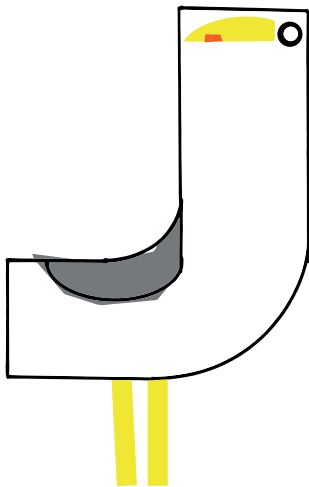
### PERSEVERE FILM SCREENING

Showing of Leith-based film, Persevere.

8th June with Director Derek Tillbrook.

8-16 June | 3pm-4pm | **FREE (BY**

**DONATION)** Little Shop of Memory, 1st floor,  
Ocean Terminal, EH6 6JJ | [www.livingmemory.org.uk](http://www.livingmemory.org.uk)



## FILM

### ARTIST MOVING IMAGE SCREENING

Screening of new  
moving image works by  
Edinburgh based artists.

8 June | 3pm-5pm | **FREE**

Leith Depot, 140 Leith  
Walk, EH6 5DT

[www.facebook.com/  
paulmaguireartist](http://www.facebook.com/paulmaguireartist)

# TAYLOR'S FUN FAIR ON LEITH LINKS

**WEDNESDAY 5TH JUNE**

6pm-9.30pm open to public

**THURSDAY 6TH JUNE**

1pm-3pm Taylor's Funfair kindly host

'Funtime' for local children with special needs

**THURSDAY 6TH JUNE**

4pm-9.30pm open to public

**FRIDAY 7TH JUNE**

2pm-9.30pm open to public

**SATURDAY 8TH JUNE**

12pm-9.30pm open to public

**SUNDAY 9TH JUNE**

12pm-7pm open to public



**TAYLORS**  
of Edinburgh

# GALA DAY

## LEITH FESTIVAL'S PRIMARY SCHOOLS POSTER COMPETITION

Children from local primary schools submit entries for this annual competition. Prizes awarded on Gala day after Country Dancing. Entries exhibited at Leith Library on dates below.

5-21 June | library opening hours | **FREE** | Leith Library,  
28 - 30 Ferry Rd, EH6 4AE | [www.leithfestival.com](http://www.leithfestival.com)

## MR BOOM AT GALA DAY

Catch legendary children's performer Mr Boom at the karaoke stage when he lands in Leith.

8 June | 11.30am-12.30pm | **FREE** | Leith Links, EH6 7QR |  
[www.leithfestival.com](http://www.leithfestival.com)

## LEITH FESTIVAL PAGEANT

This pageant first started in 1907; keep the tradition alive and join us for a celebration of Leith's maritime heritage.

8 June | 12pm-12.45pm | **FREE** | Pilrig Park - Leith Links  
[www.leithfestival.com](http://www.leithfestival.com)

I ♥ Leith

# 8 JUNE 2019

## MESSENGER SOUND SYSTEM

Dub reggae soundsystem and sunshine on Leith.

8 June | 1pm-5pm | **FREE** | Leith Links, EH6 7QR |  
[www.leithfestival.com](http://www.leithfestival.com)

## COUNTRY DANCING AT GALA DAY

Enjoy dancing performed by children from two local primary schools.

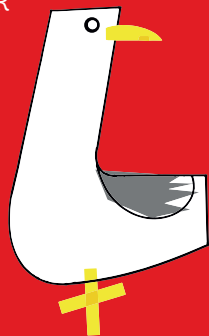
8 June | 1.45pm-2.15pm | **FREE** | Leith Links, EH6 7QR |  
[www.leithfestival.com](http://www.leithfestival.com)

## LEITH DOG SHOW AT GALA DAY

Enter your furry friend in the Leith Dog Show... run by Edinburgh Dog and Cat Home. Prettiest girl, Handsomest boy, Best OAP, Most like owner, Best trick and Waggiest tail.

8 June | 2.30pm | **FREE** | Leith Links, EH6 7QR  
[www.edch.org.uk](http://www.edch.org.uk)

**Leith**  
festival



**MEET THE ARTISTS:  
SCOTTISH DESIGN  
EXCHANGE**

**EXHIBITION**

Come along to see our artists at work.

8 and 15 June | 12pm-5pm | **FREE** | Scottish Design Exchange, 1st floor, Ocean Terminal, EH6 6JJ  
[www.scottishdesignexchange.com](http://www.scottishdesignexchange.com)

**MUSIC**

**REGGAETON WORKSHOP**

Free Reggaeton workshop with The Granary Salsa team.

| 8 June | 4pm-5pm | **FREE** | The Granary, 32/34 The Shore, EH6 6QN [www.thegranaryleith.co.uk](http://www.thegranaryleith.co.uk)



**TOUR**

**LEITH WHISKY TRAIL**

Discover Leith with a few drams.

8, 9, 15 and 16 June | 4:30pm-6:30pm | **£20** | Meet at Merchant Navy Memorial, outside Malmaison, The Shore, EH6 7BZ |  
[www.leithwhiskytrail.com](http://www.leithwhiskytrail.com)

## MUSIC

### LEITHLATE19: HAPPINESS HOTEL GIG

Intimate gig by Leith-based riot-grrrl  
pop musician Lou McLean.

Featuring Girls Rock School, Annie Booth  
and The Countess of Fife.

8 June | 7pm -10pm | **£6** | The Warehouse, 61 Queen  
Charlotte St, EH6 7EY | [www.leithlate.co.uk](http://www.leithlate.co.uk)

### LEITHLATE19: CRICKET CLUB AFTERPARTY

Join Edinburgh's all-female DJ collective MISS  
WORLD for a shimmy to celebrate the Queen's  
Birthday, with performance by Mystika Glamoor.

8 June | 10pm-3am | **£6** | Leith Franklin Cricket Club,  
1 Leith Links, EH6 7QR | [www.leithlate.co.uk](http://www.leithlate.co.uk)

## MUSIC

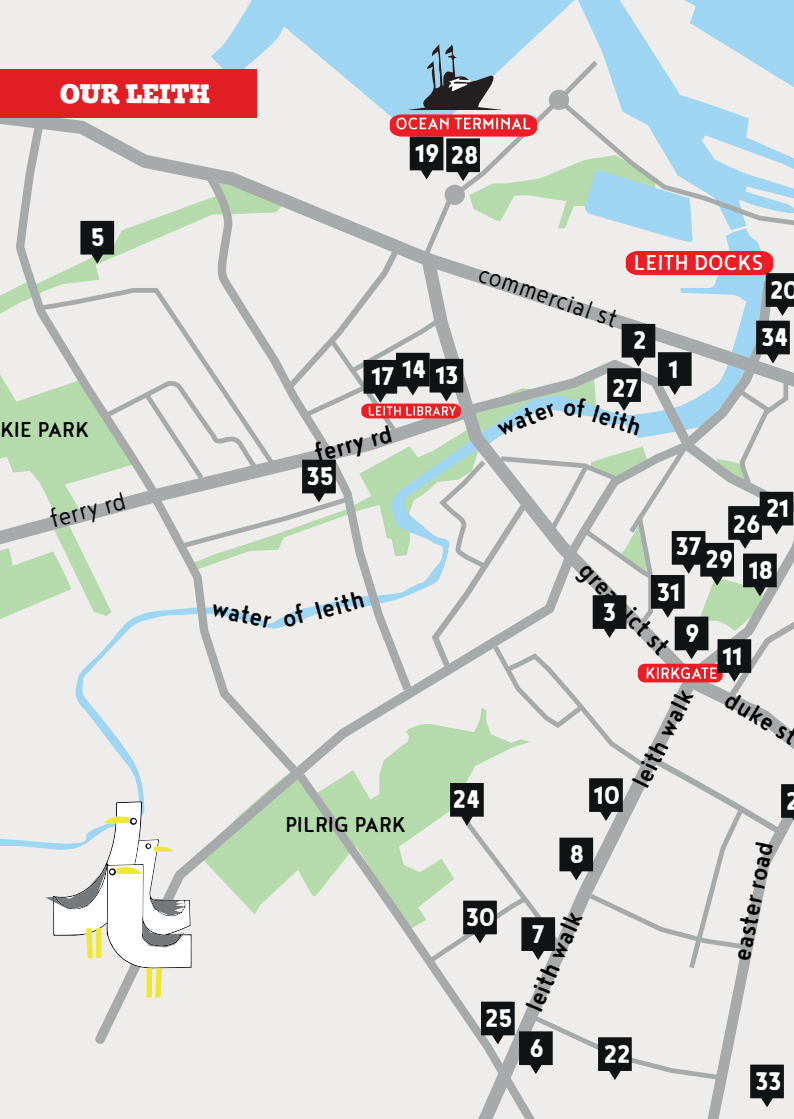
### TABLAO FLAMENCO "PRIMAVERA FLAMENCA"

From the heart of Andalucia, experience  
Flamenco Tablao in Leith.

8 June | 8.30pm-9.45pm | **£10/£8** | South Leith Parish  
Church Hall, 6 Henderson St, EH6 6BS |  
[www.tuflamenco.com](http://www.tuflamenco.com)

## DANCE

# OUR LEITH



OCEAN TERMINAL

19 28

LEITH DOCKS

LEITH LIBRARY

KIRKGATE

5

17 14 13

2

1

27

20

34

KIRKIE PARK

35

21

26

37

29

18

water of leith

31

9

11

3

leith walk

duke st

PILRIG PARK

24

10

8

30

7

25

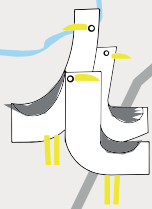
6

leith walk

easter road

22

33







## VENUES

- 1 Custom House
- 2 Dock Place
- 3 Dr Bells Baths
- 4 Easter Road Stadium
- 5 Edinburgh Sculpture Workshop
- 6 Elvis Shakespeare
- 7 Griffen Fitness
- 8 Kadampa Meditation Centre
- 9 Leith Community Centre
- 10 Leith Depot
- 11 Leith Dockers Club
- 12 Leith Franklin Cricket Club
- 13 Leith History Mural
- 14 Leith Library
- 15 Leith Links
- 16 Leith St Andrew's Church
- 17 Leith Theatre
- 18 Leith Toy Hospital
- 19 Little Shop of Memory
- 20 Malmaison Square
- 21 Maritime Lane / Maritime St
- 22 Out of the Blue Drill Hall
- 23 Persevere Bar
- 24 Pilrig Park, Balfour St entrance
- 25 Pilrig St Pauls Church
- 26 Quality Yard Art Studios
- 27 Roseleaf Bar & Cafe
- 28 Scottish Design Exchange
- 29 Scottish Lapidary Club
- 30 Shapes Studio
- 31 South Leith Parish Church Hall
- 32 SS Explorer
- 33 Studio 52
- 34 The Granary
- 35 The Village Bar
- 36 The Warehouse
- 37 Trinity House

Map not to scale, featuring only some streets.  
Please see event listing for exact street address.



4



**The Gala Day Main Stage is being co-curated by LeithLate and The Skinny this year, as part of the LeithLate19 Weekend on 8th and 9th June. Live music from all-female or female fronted bands will take place from 1.30pm till 5pm, compered by Roberta Pia of The Banana Sessions. Check the LeithLate website or social media for further line-up information.**

**Other events taking place as part of the LeithLate19 Weekend include: an intimate warehouse gig hosted and curated by Leith-based riot-grrrl pop musician Lou McLean at the Happiness Hotel, and Edinburgh's very own all-female DJ collective MISS WORLD celebrating the Queen's Birthday at Leith Franklin Academical Cricket Club on the evening of Saturday 8th June (ticketed events). The LeithLate Mural Tours return on Sunday 9th June (free, ticketed) and elsewhere, Quality Yard hosts all-female graffiti jam 'Caps Aff' both days.**

**THE SKINNY**  
INDEPENDENT CULTURAL JOURNALISM

## TOUR

### MEDITATION CENTRE OPEN DAY

Are you curious about meditation or Buddhism? Come and learn more, and take part in guided meditations.

9 June | 10.30am-2pm | **FREE** | Kadampa Meditation Centre, 172 Leith Walk, EH6 5EA |

[www.meditateinedinburgh.org](http://www.meditateinedinburgh.org)

### THIS IS LOCAL LEITH

Vibrant curated marketplace featuring over 40 local independent businesses, designers & makers.

9 June | 11am-5pm | **£2 / KIDS FREE** | Leith Theatre, 28 - 30 Ferry Rd, EH6 4AE |

[www.facebook.com/ThisIsLocalConnect](http://www.facebook.com/ThisIsLocalConnect)

## MARKET



**LEITH DEPOT**  
138 LEITH WALK  
EDINBURGH  
EH6 5DT  
0131 555 4738

**LIVE MUSIC**  
7 NIGHTS A WEEK  
**GREAT FOOD**  
SERVED 12pm - 10pm  
**QUALITY**  
BEERS WINES SPIRITS  
[www.leithdepot.com](http://www.leithdepot.com)

## FAMILY

### SUNDAY SERVICE

This service is for the community of Leith, whether you are a church-goer or not. Everyone is welcome.

9 June | 11 am | **FREE** | Pilrig St Paul's Church, 1B Pilrig St, Edinburgh EH6 5AH | [www.leithfestival.com](http://www.leithfestival.com)

### HOUSE OF JACK DANCE CLASS TASTERS

Fun, free dance class tasters for all, P1 to adults.

1pm primary 1-3; 1.45pm primary 4-7; 2.30pm secondary 2-5; 3.15pm adults hip hop; 4pm adults house; 4.15pm adults 80's and 90's. Check website for tickets.

9 June | 1pm – 5.30pm | **FREE** | | Shapes Studio, 19 Arthur Street, EH6 5DA | [www.ashleyjackdance.com](http://www.ashleyjackdance.com)

## DANCE

### LEITHLATE19: MURAL TOURS

Guided tours of Leith's murals, old and new, plus artists.

9 June | 2pm-3.30pm | **FREE (TICKETED)**

Check website for tickets. Start at Leith History Mural, North Junction St, EH6 6HN | [www.leithlate.co.uk](http://www.leithlate.co.uk)

## TOUR

## **UNsung LEITH: BUGGY WALK**

**TOUR**

A family-friendly health walk uncovering some of the trailblazing women of Leith. Check website for tickets, or turn up early on the day.

9 and 12 June | 2pm-3.30pm | **FREE (TICKETED)**

Meet in foyer of Dr Bells, 15 Junction Pl, EH6 5JA

[www.citizencurator.com](http://www.citizencurator.com)

## **MUSIC**

### **CHARLIE CHAPLIN WITH LIVE MUSIC**

Resound A Silent: Hilarious Charlie Chaplin films with live music from David Abbott.

9 June | 4pm-6pm | **£8** | Leith Depot, 140 Leith Walk, EH6 5DT

[www.facebook.com/resoundasilentfilm](http://www.facebook.com/resoundasilentfilm)

### **THE GRANARY LIVE**

Enjoy live music on  
The Shore every  
Thursday to Sunday.

9 June | 4pm-6.30pm | **FREE** | The Granary, 32/34

The Shore, EH6 6QN | [www.thegranaryleith.co.uk](http://www.thegranaryleith.co.uk)

**MUSIC**

## WORKSHOP

### FITNESS HACKS FOR CYCLISTS

You look after your bicycle, but do you look after its engine? Easy fitness tips and free healthy nibbles. Use form on website for tickets.

10 June | 6.30pm-8pm | **£10** | Griffen Fitness, 3 Balfour Street, EH6 5BY | [www.griffenfitness.com](http://www.griffenfitness.com)

### 'EMOTE' ESW

### SCHOOLS PROGRAMME

## EXHIBITION

An exhibition by pupils of Trinity and Victoria primary schools.

11 - 15 June and 17- 18 June | 10am-4pm | **FREE**  
Edinburgh Sculpture Workshop, 21 Hawthornwale,  
EH6 4JT | [www.edinburghsculpture.org](http://www.edinburghsculpture.org)

## DANCE

### TEA DANCE

The annual traditional Leith

Festival Tea Dance. Tickets on the door.

11 June | 1pm-5pm | **£5** | Leith Dockers Club,  
17 Academy St, EH6 7EE | [www.leithfestival.com](http://www.leithfestival.com)

## WORKSHOP

### SCOTTISH WOMEN'S INSTITUTE MACRAMÉ WORKSHOP

Have a go at macramé. Materials provided,  
No experience required. Go to Facebook  
page for Eventbrite link.

11 June | 6.30pm-8.30pm | **FREE (TICKETED)**

Leith Community Centre, Links Room, 12A Newkirkgate,  
EH6 6AD | [www.facebook.com/LeithWRI](http://www.facebook.com/LeithWRI)

## SPOKEN WORD

### LEITH VS THE WORLD

Leith Vs The World: An inter-disciplinary,  
inter-planetary, literary tug-of-words from the  
Edinburgh Literature Salon. Tickets on the door.

11 June | 8pm-9.45pm | **£5** | Leith Depot, 140 Leith Walk,  
EH6 5DT | [www.twitter.com/LitEdinburgh](http://www.twitter.com/LitEdinburgh)

## TOUR

### VISIT THE SS EXPLORER

Visit the Explorer, fisheries research  
vessel, in small groups (over 16's only)

Phone 07770 623 924 for tickets or email  
[lizhare@blueyonder.co.uk](mailto:lizhare@blueyonder.co.uk).

12 June | 10 - 11am, 11.30 - 12.30pm, 1.30pm - 2.30pm

**FREE (TICKETED)** | SS Explorer, Moored at Edinburgh  
Dock, EH6 4ED | [www.ssexplorerstory.co.uk](http://www.ssexplorerstory.co.uk)

## TRINITY HOUSE PACKS A PUNCH

Explore Leith's sports heritage through archive photography.

12 June | 12pm-4pm | **FREE** | Trinity House, 99 Kirkgate, EH6 6BJ  
[www.facebook.com/HistoricEnvScotland](http://www.facebook.com/HistoricEnvScotland)

EXHIBITION

## POETRY

### CULTFUSION #6

Four contrasting poets share their work, plus music.

12 June | 7pm-9.15pm | **£3** | Persevere Bar, 398 Easter Rd, EH6 8HT | [www.cultfusion.co.uk](http://www.cultfusion.co.uk)

### TRAINSPOTTING TOUR

By Tim Bell, acclaimed author of 'Choose Life. Choose Leith: Trainspotting on Location'. Tickets from website.

12 - 14 June | 7pm-9pm | **£5/£4** | Meet in courtyard of Leith Dockers Club, 17 Academy St, EH6 7EE  
[www.leithwalks.co.uk](http://www.leithwalks.co.uk)

TOUR

### HUMPDAY GIG

Celebrate the halfway point of Leith Festival with a debut set from Lizards of Alba, plus 'Erb & Ting and the notorious Victor Pope Band.

12 June | 7.30pm-11pm | **FREE (BY DONATION)** | Leith Depot, 140 Leith Walk, EH6 5DT  
[www.leithfestival.com](http://www.leithfestival.com)

MUSIC



## QUIZ

## THE GRANARY QUIZ NIGHT

Free quiz night, a £50 gift card to be won.

12 June | 7.30pm-9.30pm | **FREE** | The Granary, 32/34  
The Shore, EH6 6QN | [www.thegranaryleith.co.uk](http://www.thegranaryleith.co.uk)

## THEATRE

## SEA CHANGES

Citadel Arts Group  
present a play

about Leith's SS Explorer, through the eyes of  
wayward young Sean. Book tickets from website,  
phone 01875 340 717 or email [ftennick@hotmail.com](mailto:ftennick@hotmail.com).

12 & 13 June; 7.30pm - 8.45pm, 14 June; 2pm - 3.15pm  
**£9 / £7** | Leith Dockers Club, 17 Academy St, EH6 7EE  
[www.ssexplorerstory.co.uk](http://www.ssexplorerstory.co.uk)



Watermans

LEGAL

LEITH'S LOCAL LAW FIRM

**FREE LEGAL ADVICE CLINIC**

**22 JUNE 11am - 2 pm**

**7 DOCK PLACE Edinburgh EH6 6LU**

WILLS | EXECUTRIES | POWER OF ATTORNEY | FAMILY  
LAW | ESTATE AGENCY | PROPERTY PURCHASE AND  
SALE | CONVEYANCING | COMMERCIAL PROPERTY

0131 467 55 66 | [watermanslegal.co.uk](http://watermanslegal.co.uk)

## MUSIC

### PHOENIX CHOIR SUMMER

Four community choirs join together... With a kick!  
13 June | 7pm-9pm | **£8/£6.50** | Leith Theatre, 28-30 Ferry Rd, EH6 4AE |  
[www.thephoenixchoir.com](http://www.thephoenixchoir.com)

## MUSIC

### THE GRANARY LIVE

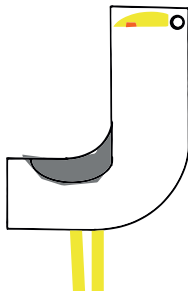
Enjoy live music on The Shore every Thursday to Sunday.  
13 to 15 June | 9pm-1pm | **FREE** | The Granary, 32/34 The Shore, EH6 6QN | [www.thegranaryleith.co.uk](http://www.thegranaryleith.co.uk)

### LAYERS OF LEITH - 'MY LEITH. YOUR LEITH. OUR LEITH?'

Exploring the changing face of Leith through a multimedia exhibition.

14 and 15 June | 10am-5pm | **FREE** | Out of the Blue Drill Hall, 36 Dalmeny St, EH6 8RG |  
[www.outoftheblue.org.uk](http://www.outoftheblue.org.uk)

## EXHIBITION

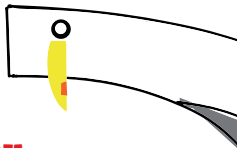


## DANCE

### LEITH COMMUNITY CENTRE CEILIDH

Join our community Ceilidh - an evening of free Scottish food and dancing. Tickets from the Community Centre.

14 June | 7pm-9.30pm | **FREE (TICKETED)** |  
Leith Community Centre, 12A Newkirkgate, EH6 6AD  
[www.leithcommunitycentre.org.uk](http://www.leithcommunitycentre.org.uk)



## EXHIBITION

### CUSTOM HOUSE OPEN DAY

Custom House - family, fun and stalls.

15 June | 10am-4pm | **FREE** | Custom House, 65-67  
Commercial St, EH6 6LH | [www.shbt.org.uk](http://www.shbt.org.uk)

Explore the historic

### TEDDY BEARS' PICNIC

A proper teddy bears' picnic, meet at  
Toy Hospital from 11am, picnic from 12pm.

15 June | 11am-2pm | **FREE (BY DONATION)**  
Leith Toy Hospital, 64 Constitution St, EH6 6RR  
[www.leithtoyhospital.co.uk](http://www.leithtoyhospital.co.uk)

## FAMILY

## EXHIBITION

### "NOT A SLAVE"

Contemporary acrylic painting exhibition by Andy McKay, on all week.  
'Meet the Artist' 15 June.

8-15 June | 12pm-7pm | **FREE**

Leith Depot, 140 Leith Walk, EH6 5DT

[www.andymckayart.co.uk](http://www.andymckayart.co.uk)

### ERRANT BOY & STEPHEN McLAREN

Leith indie Errant Media presents Errant Boy and Stephen McLaren instore.

15 June | 3pm-4.30pm | **FREE** | Elvis Shakespeare,  
347 Leith Walk, EH6 8SD |

[www.errantmedia.bandcamp.com](http://www.errantmedia.bandcamp.com)

## MUSIC

## MUSIC

### LIGHTS, CAMERA, ACTION!

Popular music themes from the stage, television

and cinema performed by the Capital Concert Band. Free tea / coffee at interval.

15 June | 7.30pm-9.30pm | **£8 / £5 / £20 FAMILY** |

Leith St Andrew's Church, 410 - 412 Easter Rd, EH6 8HT

[www.capitalconcertband.co.uk](http://www.capitalconcertband.co.uk)

## KEARA MURPHY: MEN

The truth about men. The

whole truth about men. See website for tickets.

15 June | 7.30pm-8.30pm | **£8 / £6** | Leith Dockers Club,  
17 Academy St, EH6 7EE | [www.kearamurphy.com](http://www.kearamurphy.com)

# THEATRE

## MUSIC

### ELECTRO CYCLE CLUB NIGHT

House music night

with Hi-Tech John & Foxy DJ.

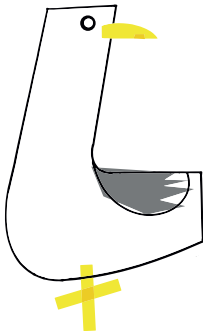
15 June | 8pm-1am | **FREE** | The Village Bar, 16 South  
Fort St, EH6 4DN | [www.electrocycle.org.uk](http://www.electrocycle.org.uk)

### BLACK ARCHES

Black Arches perform to films by  
Elizaveta Maltseva and Tara Kathleen  
Stewart, street photography by  
Alex Amoros.

16 June | 2pm-6pm | **FREE** | Leith Depot,  
140 Leith Walk, EH6 5DT  
[www.alexmoros.com](http://www.alexmoros.com)

## MULTIMEDIA



## HIBS HISTORICAL TOURS

TOUR

Open Day including tours at Easter Road Stadium.

16 June | 1pm-5pm | **FREE** | Easter Road Stadium,  
12 Albion Place, EH7 5QG | [www.hibshistoricaltrust.org.uk](http://www.hibshistoricaltrust.org.uk)

FAMILY

## LEITH FESTIVAL TATTOO

The festival's traditional last event, bringing together the best of music and dance from Leith's cosmopolitan community, topped and tailed by the pipes and drums.

16 June | 7pm-8.15pm | **FREE** | Malmaison Square  
Tower Place, EH6 7BZ | [www.leithfestival.com](http://www.leithfestival.com)

COMEDY

## THE GRANARY COMEDY NIGHT

Life is better when you're laughing...

16 June | 8pm-10pm | **FREE** | The Granary, 32/34 The  
Shore, EH6 6QN | [www.thegranaryleith.co.uk](http://www.thegranaryleith.co.uk)

## THE SIDESHOW

The Fair come to Omawick.

What will it leave behind? A production inspired by the Save Leith Walk campaign.

20 June 7pm, 21 June 6pm & 8pm, 22 June 7pm | **£8 / £4**  
Out of the Blue Drill Hall, 36 Dalmeny St, EH6 8RG  
[www.outoftheblue.org.uk](http://www.outoftheblue.org.uk)

POST-FESTIVAL

EDINBURGH

CityFibre

# The gigabit revolution is coming to Leith

CityFibre has started work on transforming Edinburgh into one of the best digitally connected cities on the planet.



**Follow the project:**  
[cityfibre.com/edinburgh](http://cityfibre.com/edinburgh)  
🐦 @gigabitedin



THE ROYAL YACHT

# BRITANNIA

Scotland's Best Visitor Attraction for 12 Years



Royal Deck Tea Room | Gift Shop | Free Parking | Highly Accessible

Visit once and come back free for a year | Buses every 10 minutes from city centre

## 10% OFF ADMISSION\*

\*T&Cs: 10% off admission for up to five people when you show this advert at our Visitor Centre.  
Not valid with any other offer, promotion or advance tickets. Valid until 31/12/19. Ref: 1314



Ocean Terminal, Leith, Edinburgh EH6 6JJ  
0131 555 8800 | [royalyachtbritannia.co.uk](http://royalyachtbritannia.co.uk)  
[enquiries@tryb.co.uk](mailto:enquiries@tryb.co.uk)  
Registered charity SC028070

